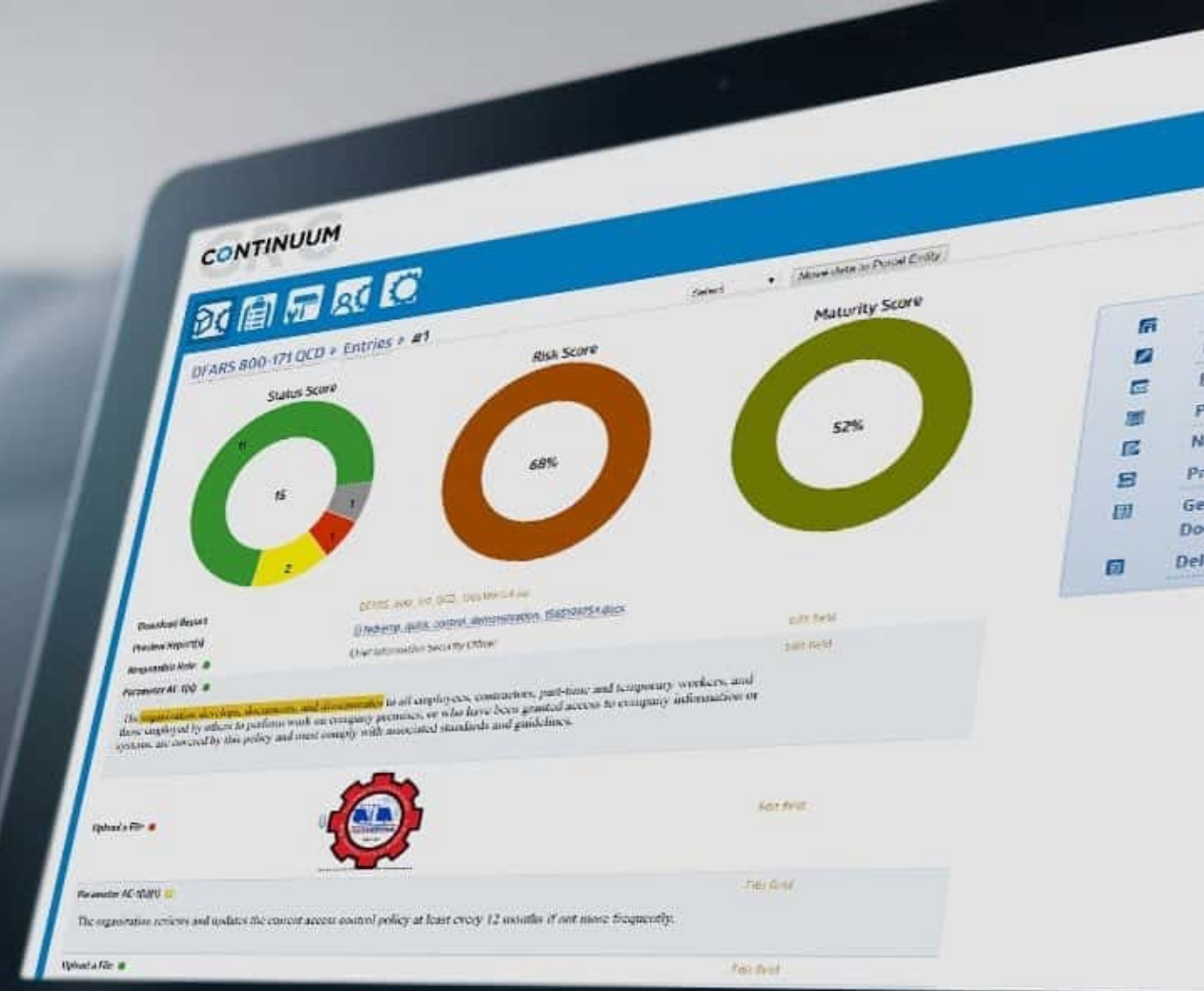


# **C**NTINUUM GRC

Your Roadmap to Risk Reduction

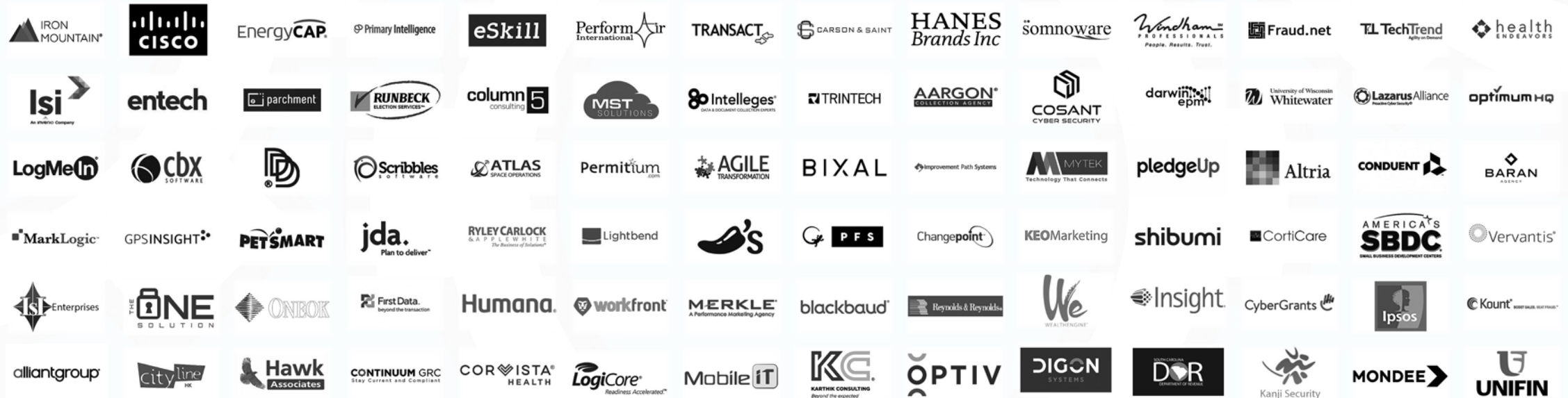
# Agile, affordable risk assessment and management compliance automation solutions.

A unified solution for cybersecurity, governance, risk and compliance assessments that supercharges performance and program management without complexity.



# Just some of the great clients we support

Continuum GRC supports many of the world's greatest organizations with cybersecurity, audit & compliance, risk assessments & risk management, governance & policy development solutions.



**CONTINUUM GRC**  
Your Roadmap to Risk Reduction

# What is Risk Management?

Risk management is the process of **identifying** risk, **assessing** risk, and taking steps to reduce risk to an acceptable level.

Continuum GRC's integrated risk management solution provides a **Roadmap to Risk Reduction** by delivering comprehensive, customizable, and intuitive enterprise solutions.



## **Enterprise & Operational Risk**

Continuum GRC provides a global solution to identify, assess and monitor risks consistently across the enterprise, auto-mapping between all the world's standards.



## **Audit & Regulatory Controls**

Continuum GRC provides a risk-based approach to Audit and Regulatory Controls Management and consolidates the entire process within a single source of truth. Supporting ALL the frameworks and standards the world has to offer such as StateRAMP, FedRAMP, CMMC, HIPAA, 800-53, CJIS, DFARS, SOC 1, SOC 2, ISO 27001, NERC CIP, SOX 404, PCI, EUCS, C5 and more.



## **Governance & Policy Controls**

Continuum GRC provides a clearly defined governance structure, stratification of authority, defined and well-communicated policies, procedures and the supporting processes critical to empowering an effective program. Generate custom policies and procedures in minutes, even internally developed policies are easy in the Continuum GRC SaaS.



## **IT & Cybersecurity Risk**

Continuum GRC makes the identification and assessment of IT & Security Risk foundational to organizational strategy to manage technology risk.

# What is Risk Management?

Risk management is the process of **identifying** risk, **assessing** risk, and taking steps to reduce risk to an acceptable level.

Continuum GRC's integrated risk management solution provides a **Roadmap to Risk Reduction** by delivering comprehensive, customizable, and intuitive enterprise solutions.



## **Third-Party & Vendor Risk**

Continuum GRC provides Third-Party and Vendor Risk Management automation oversight of third-party relationships, allowing organizations to prioritize governance necessary to manage risk across the entire third-party management lifecycle.



## **Environmental, Social & Governance (ESG)**

Continuum GRC provides ESG Management assessments, auto-mapping, monitoring, reporting, and quantification of the organization's environmental, social, and governance programs.



## **Internal Audit & Financial Controls**

Continuum GRC provides Internal Audit and Financial Controls Management to reduce compliance burdens by assessing controls through a risk-based approach. Integrated standards and frameworks help simplify processes, productivity and collaboration. Streamline the process for end-to-end Internal Audit and Financial Controls Management.



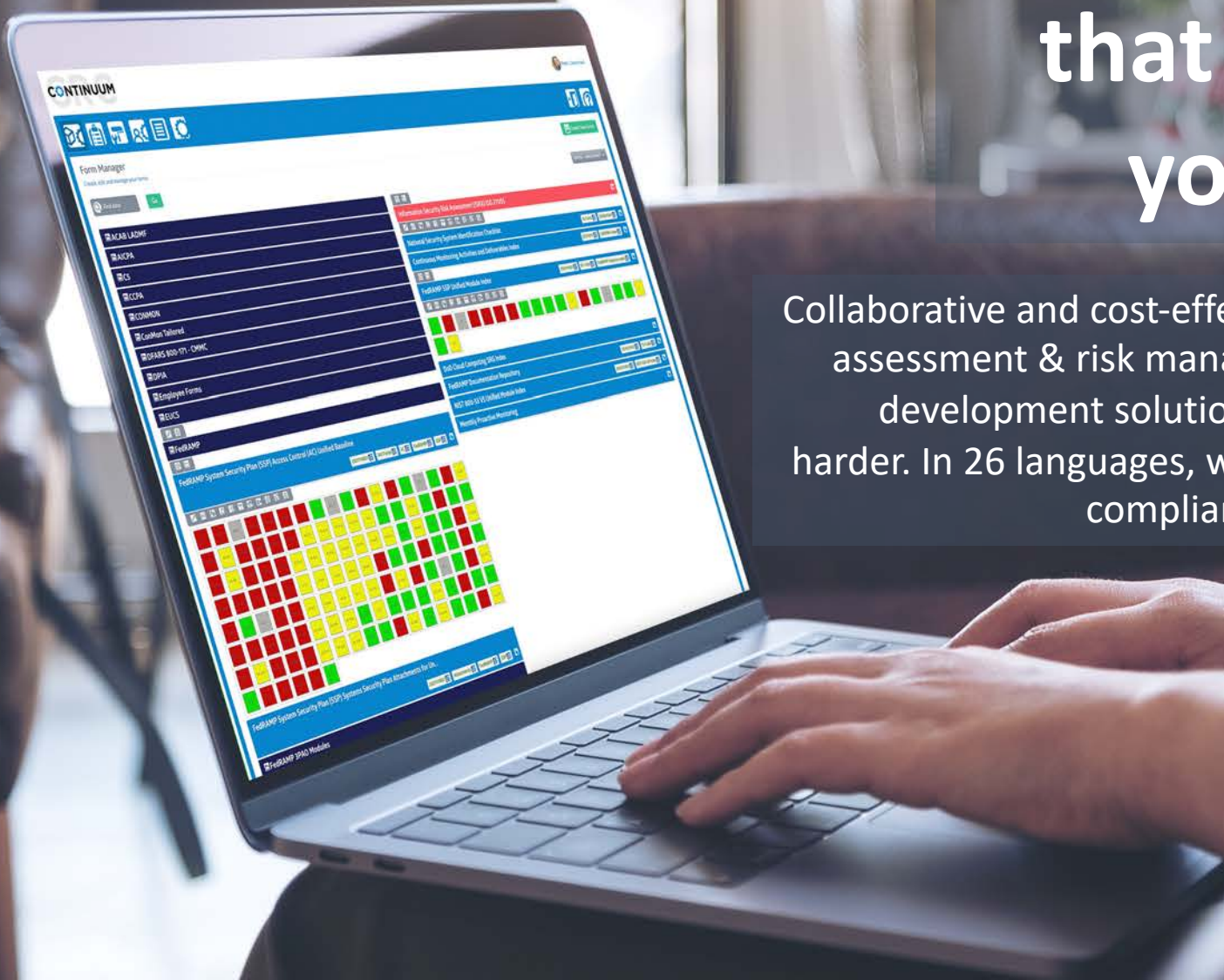
## **Resiliency & Business Continuity**

Continuum GRC provides Resilience and Business Continuity Management capabilities with an interactive, automated approach to the prioritization, planning, coordination, engagement, and insights needed to strengthen resiliency.



# Modular solutions that GROW with your business.

Collaborative and cost-effective audit & compliance, risk assessment & risk management, policy & governance development solutions help you work smarter, not harder. In 26 languages, we deliver the world's business compliance assessment requirements.





Your **Roadmap to Risk Reduction** is  
just **2 clicks** away with Continuum GRC!



# The ONLY FedRAMP & StateRAMP Authorized Risk Management and Assessment solution on the planet.

When National Security, Cybersecurity, and your Organization's Competitive Advantage is at risk, don't trust your data or success to anything less.





# CONTINUUM GRC

## Your Roadmap to Risk Reduction



### Enterprise Security

- Mandatory Multi-Factor Authentication
- Data, Disk and Session Encryption
- SAML SSO Integration
- [Blockchain Cryptographic Chain-of-Custody Evidence Management](#)
- Audit Logging, Session and Usage Alerts
- Multi-Tiered Role Based Access
- Full-Featured Account Management
- Accessibility Rules, Restrictions and Features
- FIPS 140-2 validated encryption
- FedRAMP High IL5 Ready
- FedRAMP Moderate [Authorized](#)
- StateRAMP High [Authorized](#)

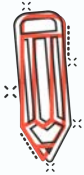


### Dynamic Dashboards

- Consolidated Executive Review
- Compliance Status
- Risk Rating
- Maturity Rating
- Task and Deliverable Reports
- Gap Reports
- Timeline Performance
- Real-Time Charts, Graphs and Maps
- 1000 Point Score Driven Report Palettes
- Dashboard Integrations
- Automatic Scores and Calculations
- Micro and Macro Reporting Graphics
- Real-Time Dashboards
- Data Trigger Logic Reporting

# CONTINUUM GRC

Your Roadmap to Risk Reduction



## Document Generation

- Rapid Document Generation
- Blockchain Cryptographic Chain-of-Custody Evidence Management
- Digital Signatures
- Audit Mode Change Control
- Change Detection Indicators
- Customizable Templates
- Template Management
- Multipart Excel, Word, CSV Spreadsheet, PDF, and TXT Document Output (POA&M, SSP, etc.)
- Easy Branding and Formatting
- Complex Auto Mapping-Cross Module Synchronizations
- Robust Document Management

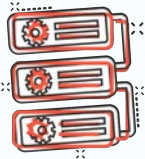


## Advanced Communications

- 26 languages supported
- Workflow Reporting and Scheduling
- Task Aging and Reminders
- Messaging Automation
- Administrative Notifications
- Communication Scheduling and Reminders
- Advanced Message Formatting
- Event Trigger Logic Multi-Tiered Messaging
- External Messaging Integrations
- Event Trigger Notifications and Redirections

# CONTINUUM GRC

## Your Roadmap to Risk Reduction



### Easy Automation

- [Auto Mapping Between Standards](#)
- [Auto Mapping with Custom Forms](#)
- Workflow Management
- Change Control Indicator Triggers
- Show-Hide Logic
- Conditional Logic Event Triggers
- Intuitive Event Driven Form Navigation
- Action Triggered Notifications
- Dynamic Form Expansion and Contractions
- External Application Logic Integrations
- Risk Registry, Control Flagging and Iconic Tagging
- Inventory Management



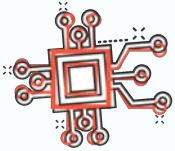
### Creativity Tools

- Drag-n-Drop Build Tools
- Form Cascading and Smart Linkages
- 23+ Flexible Form Field Elements
- Video, Animations, Static Graphics, and RSS Syndication
- Advertising and Notification Slider and Pop-ups
- Rich Text
- International Languages and Currency Support
- No Programming Required
- Brand, Theme, and White-Label Ready
- Global CSS Control



# CONTINUUM GRC

## Your Roadmap to Risk Reduction



### Integrations and Connectivity

- Access Management with AWS, Microsoft, Google, Okta, Ping, and more
- Vulnerability and Penetration Tools with Saint, Tenable, and more
- Project Reporting and Status with JIRA, Wrike, and more
- Forms, CRM, and Surveys with Survey Monkey, Mailchimp, Salesforce, and more
- Documents, Calendars, and Scheduling with Sheets, Google Calendar, and more
- 100's of other mission-critical business applications using our integration tools
- Boolean Logic Application Connectors
- Webhook Enabled
- Automatically Provisioned Connector Code
- Import-Export Data Management



### Innovations and Agility

- Patent Pending
- Day-One Availability and Productivity
- Paradigm Shifting Assessment Methodology
- Industry Disrupting Technology
- Rapid Customization Capabilities
- Customer-Friendly Innovation Support
- Extensive Enhancement Pipeline
- Robust Customer Community

**Auto mapped  
standards,  
automated  
documentation,  
real-time status,  
risk & maturity.**

When it comes to Compliance Cartography, no one is more comprehensive, secure and automated saving you time, trouble and money. Serving the enterprise to the start-up community.



# CONTINUUM GRC

## Your Roadmap to Risk Reduction



### Automapping save you time and money

- When you eliminate manual time working, you increase profits and manage more GRC-based programs, projects, and clients!
- **How much time do you currently spend on spreadsheets and manual processes?**



### Unified Source of Truth

- Only one portal is required to manage all your customers, team members, or examiners.
- See and manage everyone in one place.
- Organize and streamline your GRC eco-system.



### Exponential Cost Reductions

- Use our GRC modules as many times as you need for as many users as you need.
- Your total cost of ownership goes down with each customer or group that uses our modules.



# C<sup>o</sup>NTINUUM GRC

Your Roadmap to Risk Reduction



## Service Provider Solutions

- With our 1+1 administrative access subscriptions, scale as your business grows.
- Manage as many client customers in your Continuum GRC portal as needed.
- Manage as many groups or teams in your Continuum GRC portal as needed.
- Continuum GRC modules will accommodate as many internal teams as you need to scale to.
- Incrementally add users, administrators, assessors, auditors, and modules to your Continuum GRC system.
- Easily custom create purpose-built modules, questionnaires, forms, workflows, notification processes, custom dashboards, and leverage the many powerful system features in your dedicated Continuum GRC system.
- Access to certified professionals who provide consulting support for programs such as FedRAMP, StateRAMP, SOC 1, SOC 2, PCI ROC & SAQ, ISO 27001, HIPAA, CJIS, NIST 800-53, EUCS, and **hundreds** more.

# CONTINUUM GRC

## Your Roadmap to Risk Reduction



### Enterprise Solutions

- Leverage the 1+1 administrative access subscriptions and scale to your organization's needs.
- Manage as many enterprise groups or teams in your Continuum GRC portal as needed.
- Continuum GRC modules will accommodate as many internal teams as you need to scale to.
- Incrementally add users, administrators, and modules to your Continuum GRC system.
- Easily custom create purpose-built modules, questionnaires, forms, workflows, notification processes, custom dashboards, and leverage the many powerful system features in your dedicated Continuum GRC system.



### DIY Solutions

- Select from the many Audit & Compliance modules
- Choose from our Risk Assessment & Risk Management modules
- Customize the Governance & Policy Development packages for your requirements
- Custom Continuum GRC created, purpose-built modules, questionnaires, forms, workflows, notification processes, and dashboards managed by the Continuum GRC team.
- Access to certified professionals who provide consulting support for programs such as FedRAMP, StateRAMP, SOC 1, SOC 2, PCI ROC & SAQ, ISO 27001, HIPAA, CJIS, NIST 800-53, EUCS, and **hundreds** more.

# CONTINUUM GRC

## Your Roadmap to Risk Reduction



### Select the Modules You Need

With hundreds to choose from within these categories, you are sure to find the solution you need.

- Audit & Compliance Framework Modules
- Risk Assessment & Management Modules
- Governance & Policy Development Modules
- Custom created modules



### Select the Access You Need

- How many Administrators, Examiners, Entities and Users do you need?
- Will you manage multiple customers or internal departments in your Continuum GRC system?



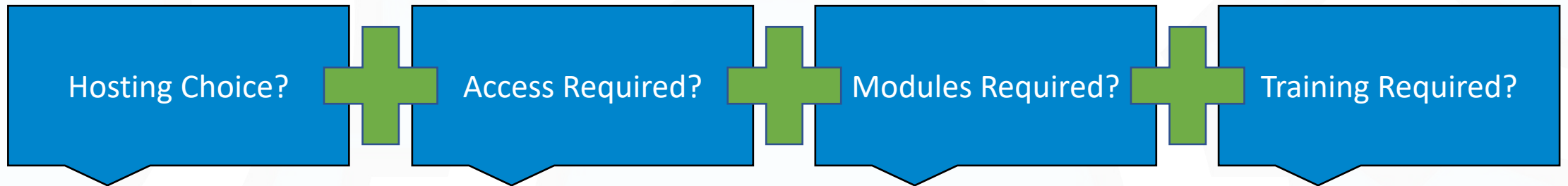
### Select the Hosting Security You Need

- Organizations with Federal and or CUI data, will need FedRAMP Authorized AWS GovCloud hosting, otherwise AWS hosting is just right.
- Do you need a dedicated Continuum GRC system, or just access to use our modules?



# CONTINUUM GRC

Your Roadmap to Risk Reduction



**\*Example:** AWS Data Hosting \$8,180 + 1 Admin + 20 Users + 1 Entity + Modules (\$800 on up.) = \$8,980 a year (\$824 monthly on annual contract.)

\*This is an example only, your specific configuration may vary.

# CONTINUUM GRC

## Your Roadmap to Risk Reduction



### Setup

- 24-Hour availability for all independent module subscriptions in our inventory
- 24-Business Hour availability for all AWS dedicated hosting subscriptions
- 96-Business Hour availability for all AWS GovCloud dedicated hosting subscriptions
- Rapid turn-around on all custom created and standards-based modules created by the Continuum GRC team
- Setup times may vary depending on the nature of special requests, hosting provider availability, government restrictions, and other unforeseen circumstances.



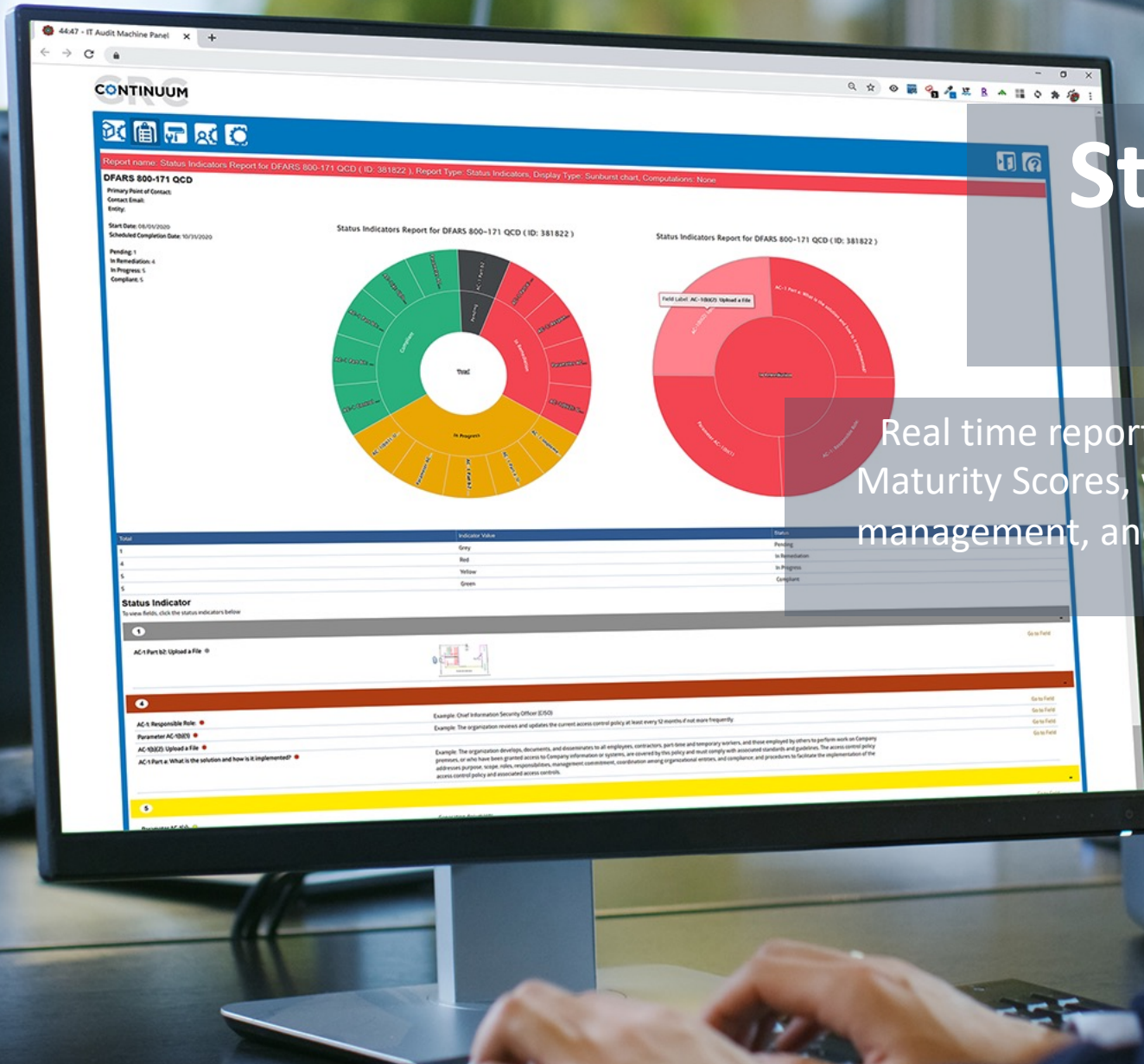
### Training & Orientation

- Online Continuum GRC training videos and literature available to all subscribers
- Online Continuum GRC Orientation videos and literature available to all subscribers with dedicated hosting
- Virtual Continuum GRC 2-Day Boot Camp options for all subscribers with dedicated hosting
- On-site Continuum GRC 2-Day Boot Camp options for all subscribers with dedicated hosting
- On-demand time and materials-based Continuum GRC Consulting sessions

\* Setup times may vary depending on the nature of special requests, hosting provider availability, government restrictions, and other unforeseen circumstances.

# Stay current and compliant.

Real time reports on Compliance Status, Risk Scores, Maturity Scores, workflows, tasking records, evidence management, and historical performance helping you stay proactive; not reactive.





# CONTINUUM GRC

Your Roadmap to Risk Reduction



## Service and Support

- Basic Usage Guide for Users: <https://continuumgrc.com/usage-guide/>
- Online Continuum GRC Service Manager available to all subscribers at <https://continuumgrc.atlassian.net/servicedesk/>
- Call +1 (888) 896-6207 x41 for Continuum GRC customer service
- Online Continuum GRC knowledge base for all subscribers
- Online Continuum GRC Administration Manual for all subscribers with dedicated hosting at <https://continuumgrc.atlassian.net/servicedesk/>
- Dedicated Service Agent for all subscribers with dedicated hosting
- Monday through Friday, 9AM MNT to 5PM MNT online support for subscribers without dedicated hosting